

# Expandet Drop In Anchor E

Expandet Drop In Anchor-E is suitable for fixing with metric screws, threaded rods etc. in concrete.

ETA Approval according to ETAG 001, part 6, for use in cracked concrete.



**CONCRETE**

## ADVANTAGES

- Easy and leveled fixing.
- High load capacities.
- Short drill depth.
- Deformable cone adapts to the concrete strength and ensures proper expansion despite drilling with new or old used drill.
- ETA Approval according to ETAG 001, part 6, allows for use in cracked concrete.
- Anchorages can be designed in Expandet Calculating Software.

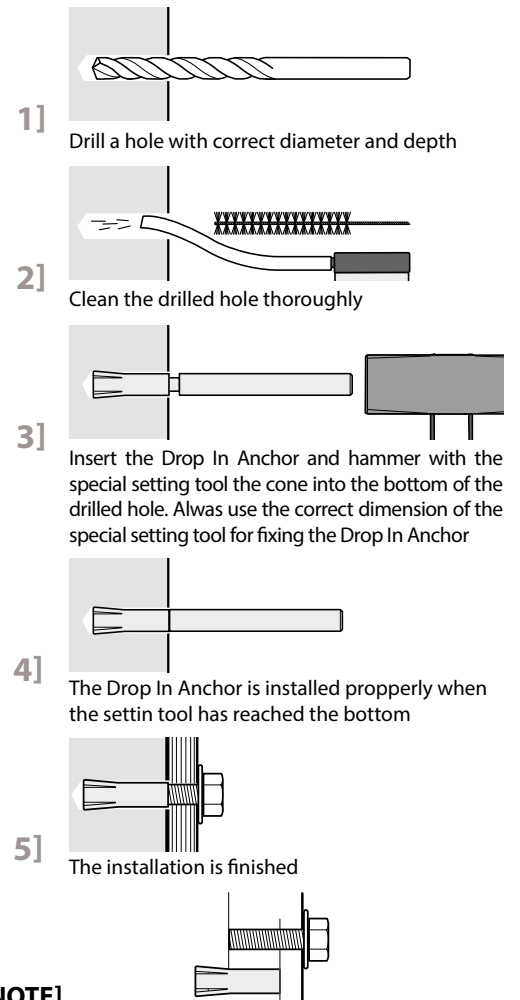


Type	Drill depth	Design load capacities	
		$N_{Rd}$	$V_{Rd}$
		Tension load	Shear load
DIMENSION	mm	kN*	kN <sup>◇</sup>
M6	30	4,60 (4,60)	4,00 (4,50)
M8	30	3,90 (4,60)	5,50 (6,40)
M10	40	7,10 (8,50)	5,70 (8,30)
M12	50	9,90 (11,80)	16,80 (16,60)
M16	65	14,60 (17,60)	25,10 (26,90)
M20	80	20,00 (24,00)	40,00 (42,90)

( ) Values in ( ) are valid for Drop in Anchor E Inox A4.  
 \* Design tension loads are valid for a single anchor with a thread in minimum steel class 5.8 (for stainless thread, minimum class A4-70) in concrete  $\geq C 20/25$  not influenced by edge distance and/or spacing.

◇ Design shear loads are valid for a single anchor with a threaded rod in minimum steel class 5.8 (for stainless threaded rod, minimum steel class A4-70) in concrete  $\geq C 20/25$  not influenced by edge distance and/or spacing.

## INSTALLATION:



**NOTE]** Do not overtighten. Observe the required setting torque. Select bolt length that the inner thread length is not exceeded when the bolt is screwed in



## Expandet Drop In Anchor E, zinc plated



### EXPANDET DROP IN ANCHOR E, zinc plated (Technical Sheet No. 408)

TYPE	DIMENSION	DRILL DIA.	DRILL DEPTH	MIN. SCREW IN DEPTH	EXPANDET ARTICLE NO.	PCS. PER BOX	EAN 13 PER BOX
	MM						
E	6 x 30	8	30	7	77031	100	5708620097251
E	8 x 30	10	30	9	77032	100	5708620097268
E	10 x 40	12	40	11	77035	50	5708620209364
E	12 x 50	15	50	13	77034	50	5708620097282
E	16 x 65	20	65	18	77039	25	5708620097299
E	20 x 80	25	80	22	77040	20	5708620097305

ETA, Option 7, CE-marked

Fire classification: R120

VDS Approval: M8-M12

## Expandet Drop In Anchor E, Inox A4 (316)



### EXPANDET DROP IN ANCHOR E, Inox A4 (316) (Technical Sheet No. 408)

TYPE	DIMENSION	DRILL DIA.	DRILL DEPTH	MIN. SCREW IN DEPTH	EXPANDET ARTICLE NO.	PCS. PER BOX	EAN 13 PER BOX
	MM						
E-A4	6 x 30	8	30	7	77031 R	100	5708620099767
E-A4	8 x 30	10	30	9	77032 R	100	5708620099774
E-A4	10 x 40	12	40	11	77035 R	50	5708620209371
E-A4	12 x 50	15	50	13	77034 R	50	5708620099798
E-A4	16 x 65	20	65	18	77039 R	25	5708620099804
E-A4	20 x 80	25	80	22	77040 R	20	5708620099811

ETA, Option 7, CE-marked

Fire classification: R120

VDS Approval: M8-M12



## Expandet Setting tool for Drop In Anchor

Expandet setting tool is used for installing the Drop In Anchor



### EXPANDET SETTING TOOL

**TYPE**  
For Drop In Anchor:

M6
M8
M10
M12
M16
M20

EXPANDET ARTICLE NO.	PCS. PER BOX		EAN 13 PER BOX
977950	1		5708620096803
977951	1		5708620096810
977952	1		5708620096827
977953	1		5708620096834
977954	1		5708620096872
977955	1		5708620097312

**CONCRETE**